



471 Pleasant Street, Lee, MA 01238

TEL 413-243-4950, 800-243-4950
www.limelightproductions.com

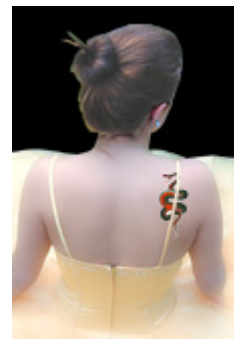
FAX 413-243-4993, 800-243-4951

Covering a Tattoo

A Time and Place For Everything

Tattoos are popular, but they may not be appropriate to a particular character in a play, or on a bride's shoulder at a wedding. What to do? Cover it up.

Ben Nye's® *Concealer Palette* is the perfect solution for temporarily covering a tattoo. Here's how to do it:*



1. Cover the darkest blue-black shade first with an orange-based shade such as MO-3 (*Mellow Orange Deep*) or NB-4 (*Blue Neutralizer 4*). Apply with your fingers or a sponge using a stippling motion.
2. Blend, then set with face powder (such as *Fair Translucent*). Apply the powder liberally, dust off the excess, and then dab with a moistened sponge.
3. Spray *Final Seal* over the powdered concealer to resist smudging.
4. Cover any redness with the appropriate *Mellow Yellow* or *Red Neutralizer* shade (MY-3 *Mellow Yellow Classic* for example). Powder and seal again (steps 2 & 3).
5. Apply additional layers of *concealers* as necessary. Apply foundation over the entire area to blend with your skin tone. *Color Cake Foundation* will provide an excellent finish. Apply with a moistened sponge, then gently pat to even out the color.
6. Top with a final layer of *Final Seal* for extra durability.



The Ben Nye® *Concealer Palette* covers the gamut when it comes to tattoos. The intensely pigmented cremes provide flawless, long-wearing and "invisible" coverage.



For more information, request a free copy of the Ben Nye® Catalog or to order any of Ben Nye's® professional makeup products, call **1-800-243-4950**.

* How-to instructions adapted from Ben Nye®, reused with permission.